

TR808 PSU

Installation Manual

Index

Document revisions	3
1 Setup	4
Intended use	4
What is included	4
2 Installation.....	5
Step 1:	5
Step 2:	6
Step 3:	7
Step 4:	8

Document revisions

Date	Doc. revision	FW version	Change
29-11-2023	R1.0	na	Initial document

1 Setup

Intended use

The TR-808 PSU is intended to replace the old power supply unit of the Roland TR808.

What is included

Please ensure that your package includes the following:

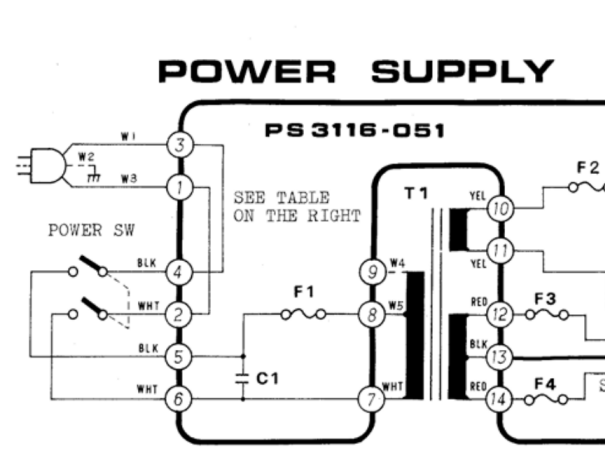
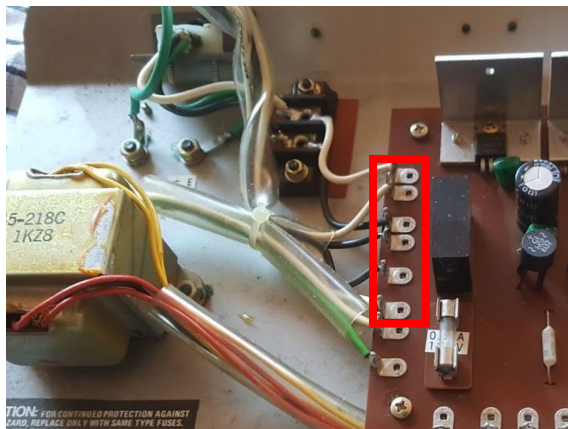
- TR-808 replacement PSU

2 Installation

- DO NOT USE THE NEW PSU WITHOUT ANY LOAD, this can damage the PSU
- Be careful when working on mains equipment. Disconnect all cables before working on the TR808.

Step 1:

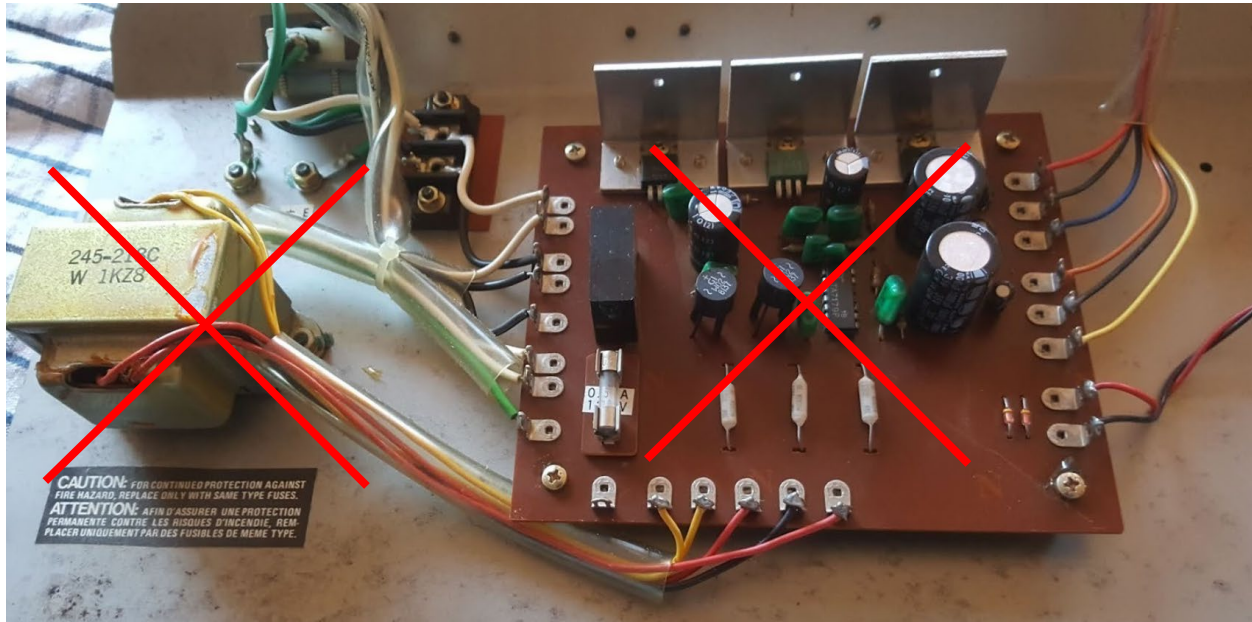
Mark the 6 wires connected to the AC input and power switch.



From Top left downwards: 1,2,3,4,5,6. These wires must be connected to the new power supply in the way.

Step 2:

Remove the old PSU board, remove the old transformer from the tr-808 by loosening the screws that are holding the PCB.



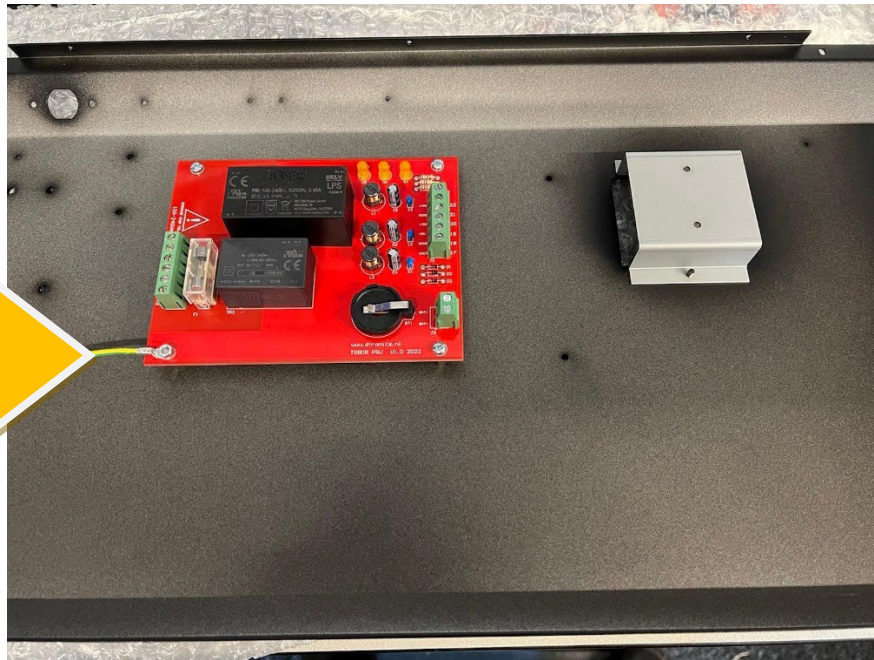
Step 3:

Place the new DT-808 Powersupply on the 4 mounting points

Connect a mains earthing point to the PCB



Mains earth point



New power supply and Mains earth point

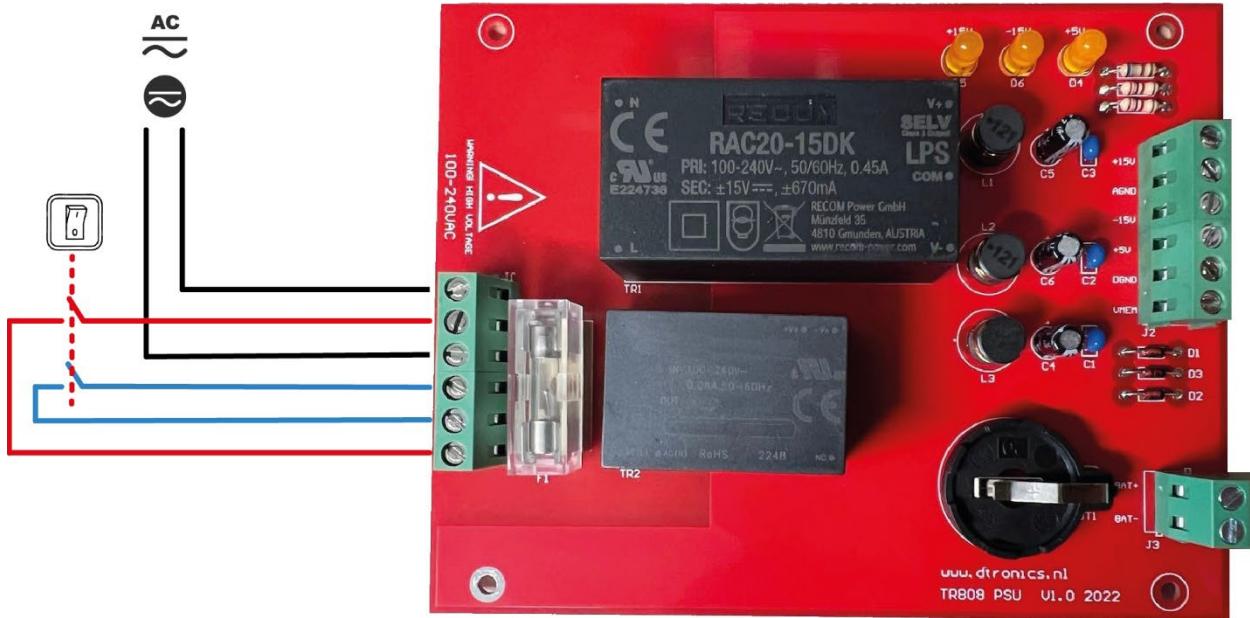
Step 4:

Connect the new power supply using the schematic:



Power out:	
+15V	RED
AGND	BLACK
-15V	BLUE
+5V	ORANGE
DGND	BLACK
VMEM	YELLOW

Battery	
BAT+	RED
BAT-	BLACK



AC power/ Power switch	
Wire 1	AC
Wire 2	SW1
Wire 3	AC
Wire 4	SW2
Wire 5	SW2
Wire 6	SW1

Check if all wires are connected the correct way, turn the power back on and enjoy your TR808.