



# DT-RDX-V2

Firmware update manual

## INTRODUCTION

The DT-RDX-V2 is equipped with bootloader functionality. This is a piece of software that can be used to update the software inside the DT-RDX-V2.

With this technology you are able to update your DT-RDX-V2 to the latest firmware version.

## Index

INTRODUCTION .....	2
Document revisions .....	4
Software revisions .....	4
1 Firmware Update.....	5
What do you need.....	5
Current Firmware version DT-RDX-V2.....	6
How does it work. ....	7

## Document revisions

Date	Version	Change
18-10-2023	R10	Initial document
15-12-2023	R11	Added V2 image and changed minor things.

## Software revisions

Date	Version	Change
18-10-2023	R21	Initial release
15-12-2023	R22	Optimized software, fixed MIDI-IN bug

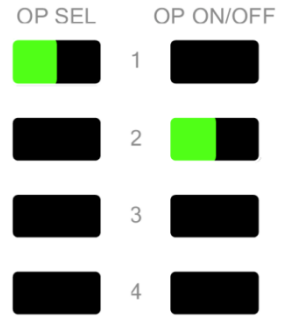
# 1 Firmware Update

## What do you need

- A midi program like MIDI OX to send the new firmware file to the DT-RDX-V2  
<http://www.midiox.com/>
- The DT-RDX-V2 firmware file  
<http://www.dtronics.nl/pages/dtrdx.html>

## Current Firmware version DT-RDX-V2

The firmware version of the DT-RDX-V2 is shown while powering up the DT-RDX-V2. The right 8 LEDs indicate the firmware version on power up. This image shows version 1.2



## How does it work.

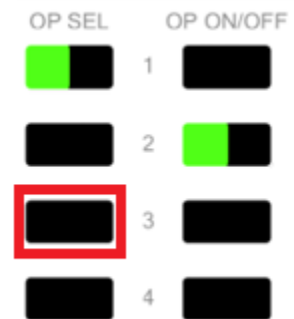
Updating the DT-RDX-V2 is done by sending the new firmware file to the DT-RDX-V2 in System Exclusive format (or simply SysEx).

### Updating steps:

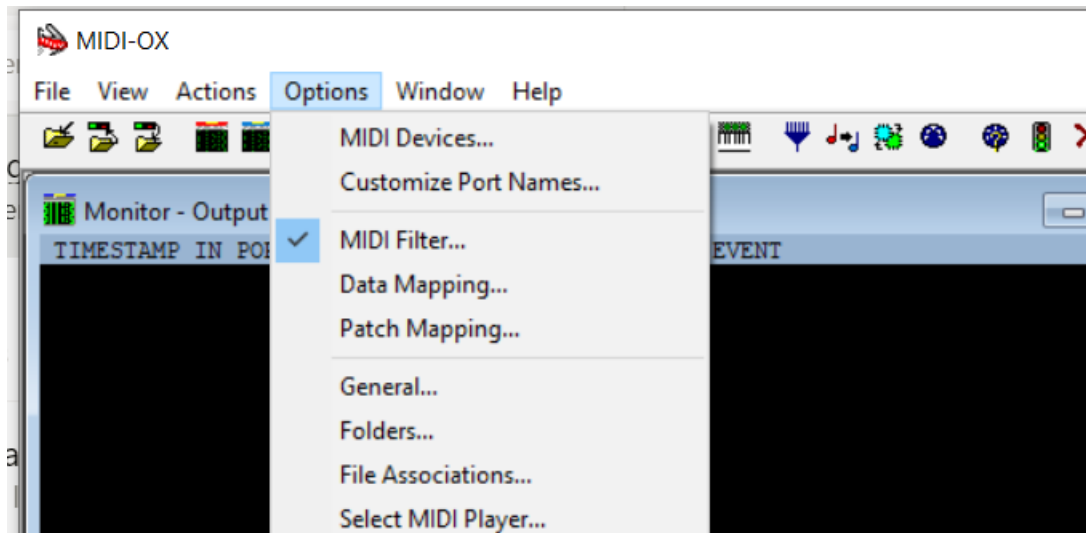
- Download the latest firmware version from our website.
- Install a midi program that has SysEx support in this manual we are using MIDI-OX
- Connect the MIDI IN from the DT-RDX-V2 with the MIDI OUT from the computer running the MIDI software

- **Do NOT connect the midi out of the programmer.**

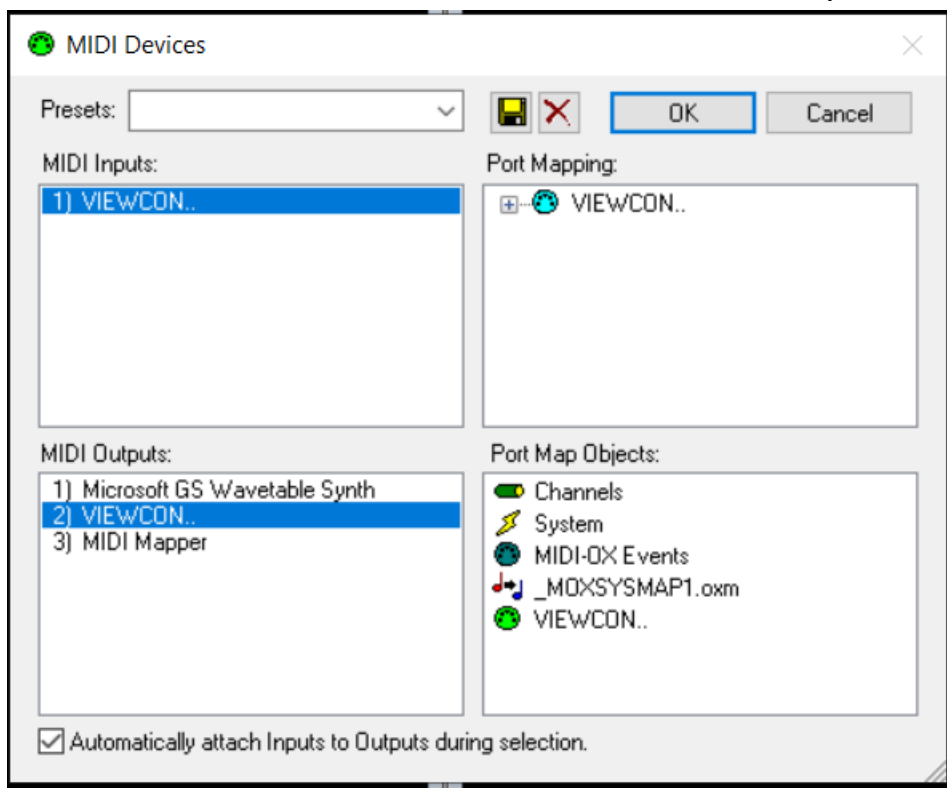
- **HOLD** OPSEL 3 switch (button 5, see figure 1) while **turning on** the DT-RDX-V2. OPSEL 3 will go on. Now you can release the button. The DT-RDX-V2 is now in bootloader mode.



- Open MIDI-OX and select the right midi output device that you are using. Menu Options -> MIDI Devices

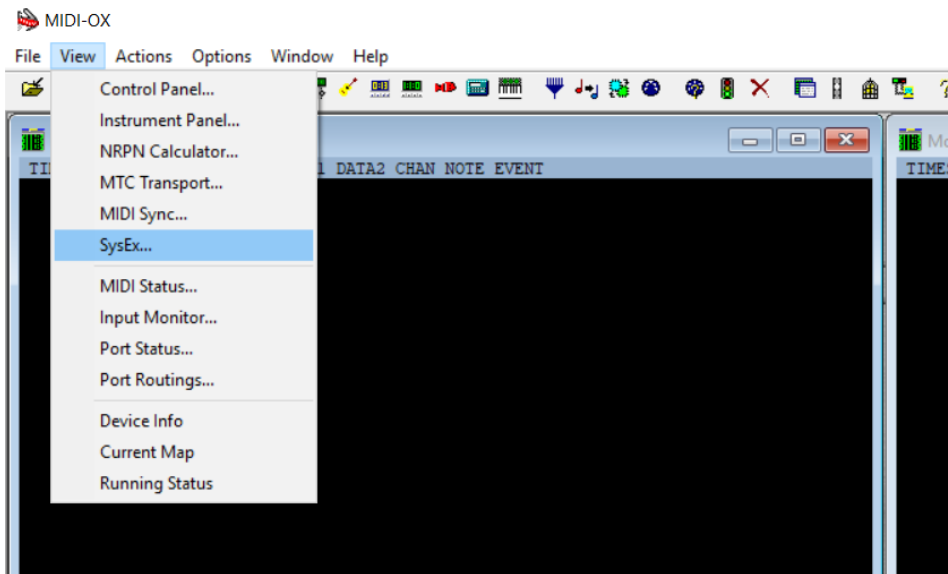


- In the MIDI Devices menu check if the MIDI output device is right

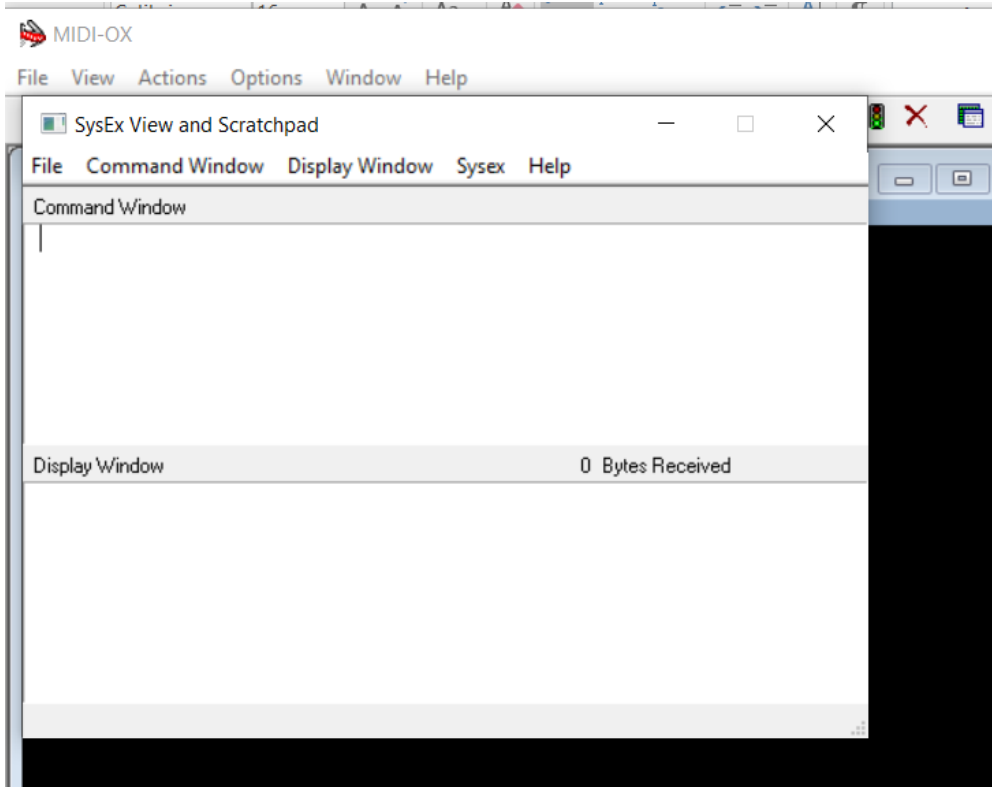




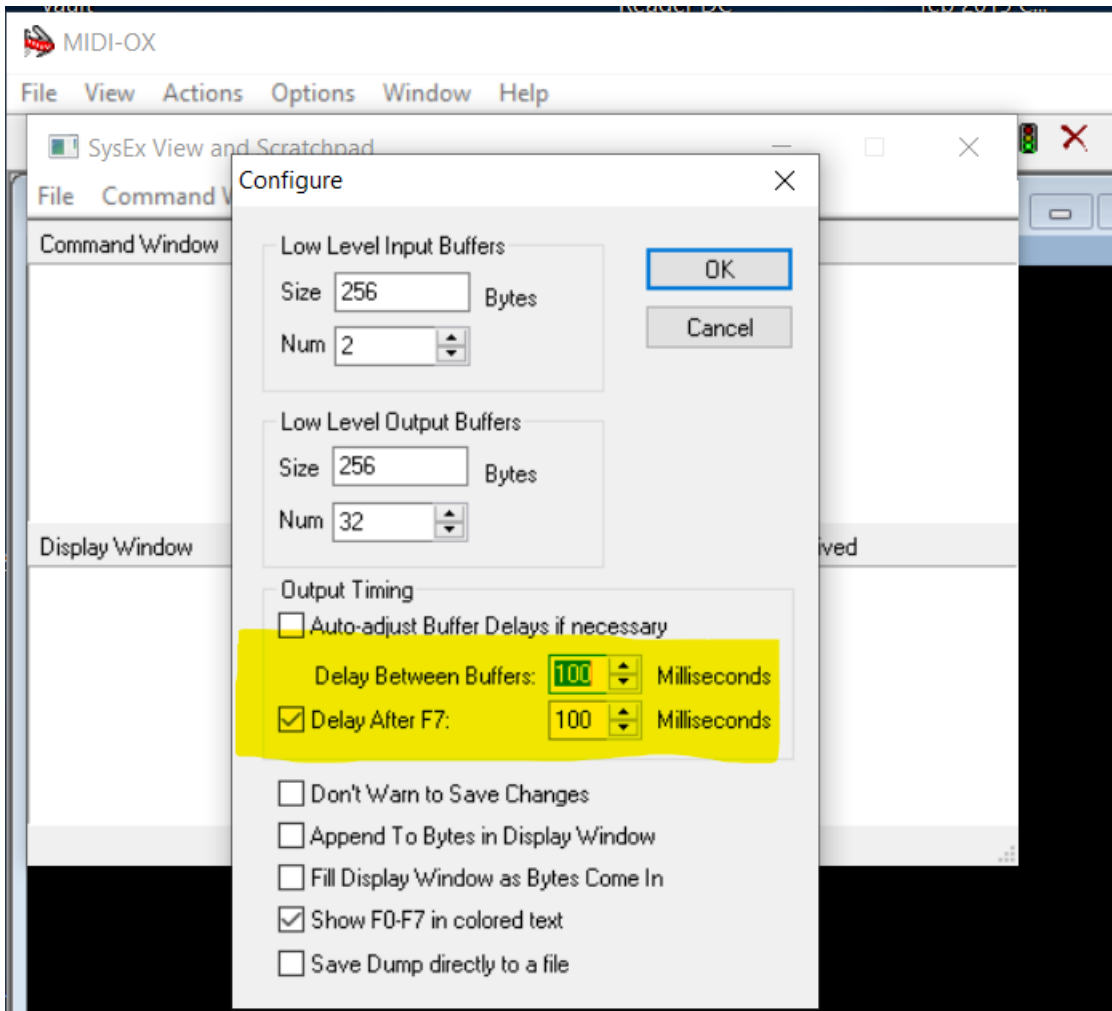
- 
- Navigate to menu **View -> SysEx**



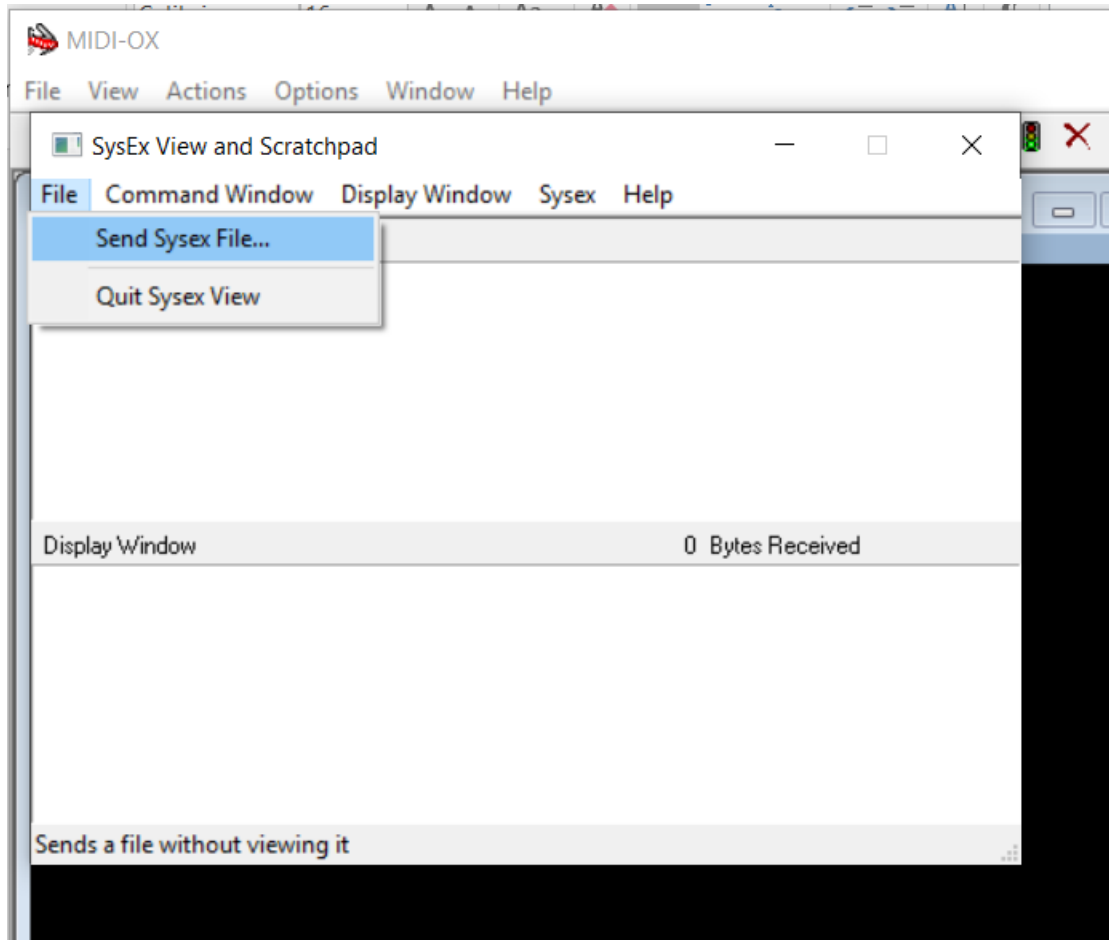
- The SysEx menu will open.



- 
- 
- Navigate to Sysex > Configure  
Set delay between buffers and delay after f7 to 100  
make sure the box before "delay after F7" is checked.



- Click on **File** and select the option Send Sysex File.



- Select the downloaded firmware file and press OK. Uploading the file will take a few minutes.
- After completion, the DT-RDX-V2 will reset and start up and the LED's will shown the new firmware version.

Any questions please let us know.