



DT-RDX

Firmware update manual

INTRODUCTION

The DT-RDX is equipped with bootloader functionality. This is a piece of software that can be used to update the software inside the DT-RDX. With this technology you are able to update your DT-RDX to the latest firmware version.

Index

INTRODUCTION.....	2
Document revisions	4
Software revisions.....	4
1 Firmware Update.....	5
What do you need.....	5
Current Firmware version DT-RDX	6
How does it work.	7

Document revisions

Date	Version	Change
14-04-2019	R10	Initial document

Software revisions

Date	Version	Change
14-04-2019	R12	Initial release
02-08-2020	R13	Optimized software for performance

1 Firmware Update

What do you need

- A midi program like MIDI OX to send the new firmware file to the DT-RDX
<http://www.midiox.com/>
- The DT-RDX firmware file
<http://www.dtronics.nl/pages/dtrdx.html>

Current Firmware version DT-RDX

The firmware version of the DT-RDX is shown while powering up the DT-RDX. The right 8 LEDs indicate the firmware version on power up. This image shows version 1.2



How does it work.

Updating the DT-RDX is done by sending the new firmware file to the DT-RDX in System Exclusive format (or simply SysEx).

Updating steps:

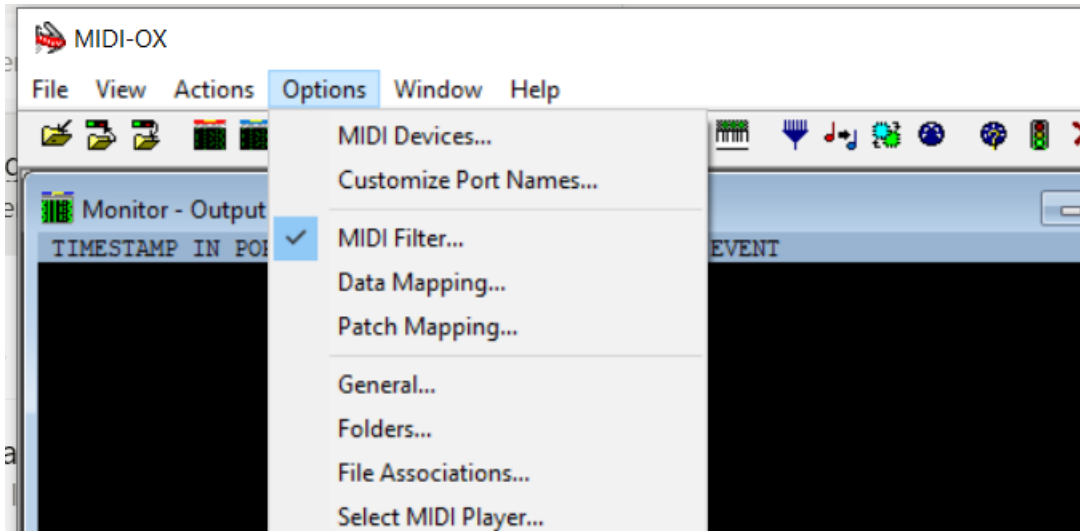
- Download the latest firmware version from our website.
- Install a midi program that has SysEx support in this manual we are using MIDI-OX
- Connect the MIDI IN from the DT-RDX with the MIDI OUT from the computer running the MIDI software

- **Do NOT connect the midi out of the programmer.**

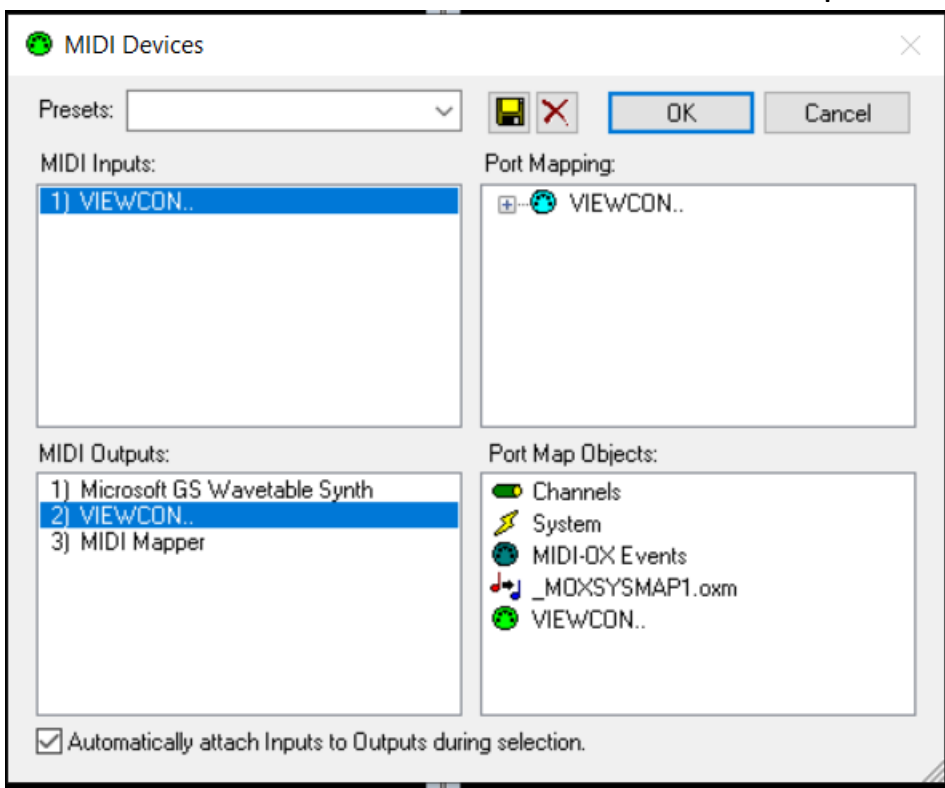
- **HOLD** OPSEL 3 switch (button 5, see figure 1) while **turning on** the DT-RDX. Nothing will happen, no lights will go on. Now you can release the button. The DT-RDX is now in bootloader mode.



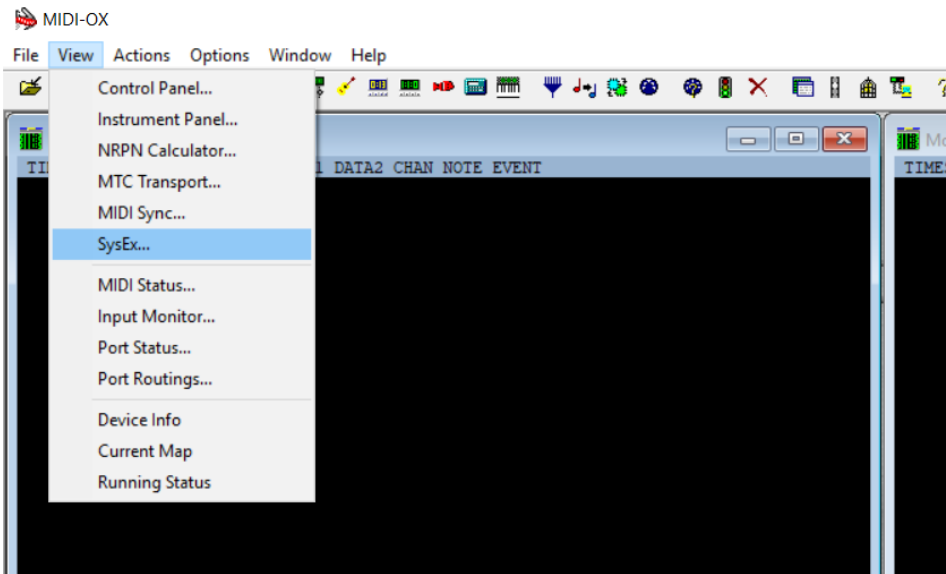
- Open MIDI-OX and select the right midi output device that you are using. Menu Options -> MIDI Devices



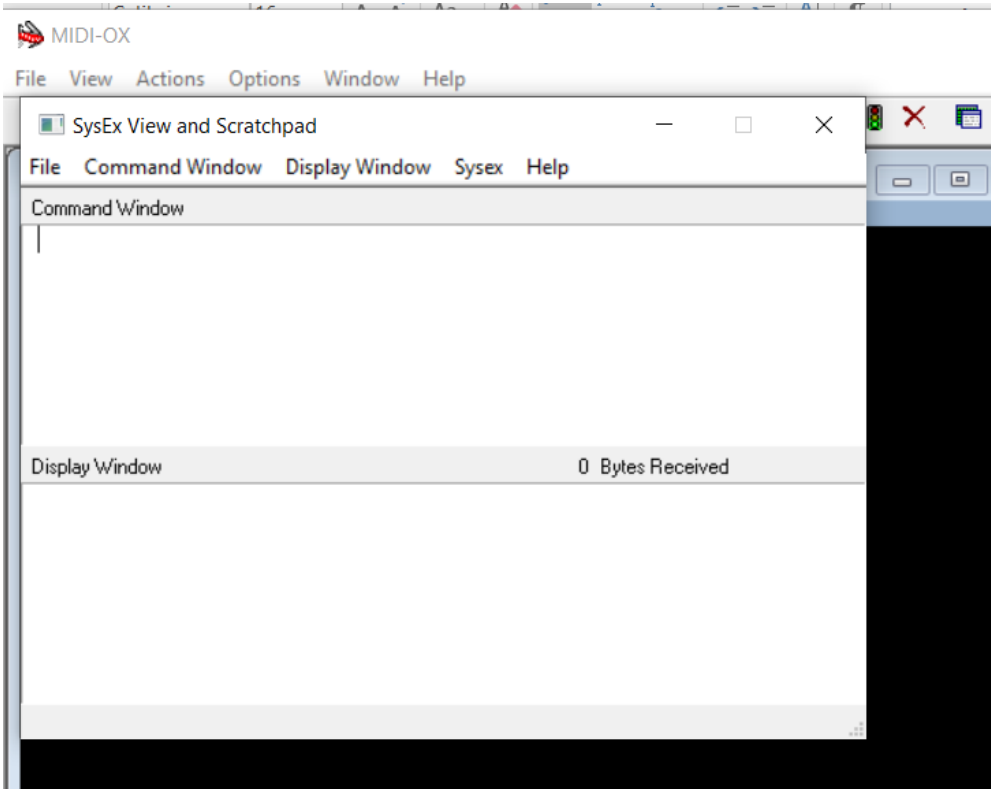
- In the MIDI Devices menu check if the MIDI output device is right



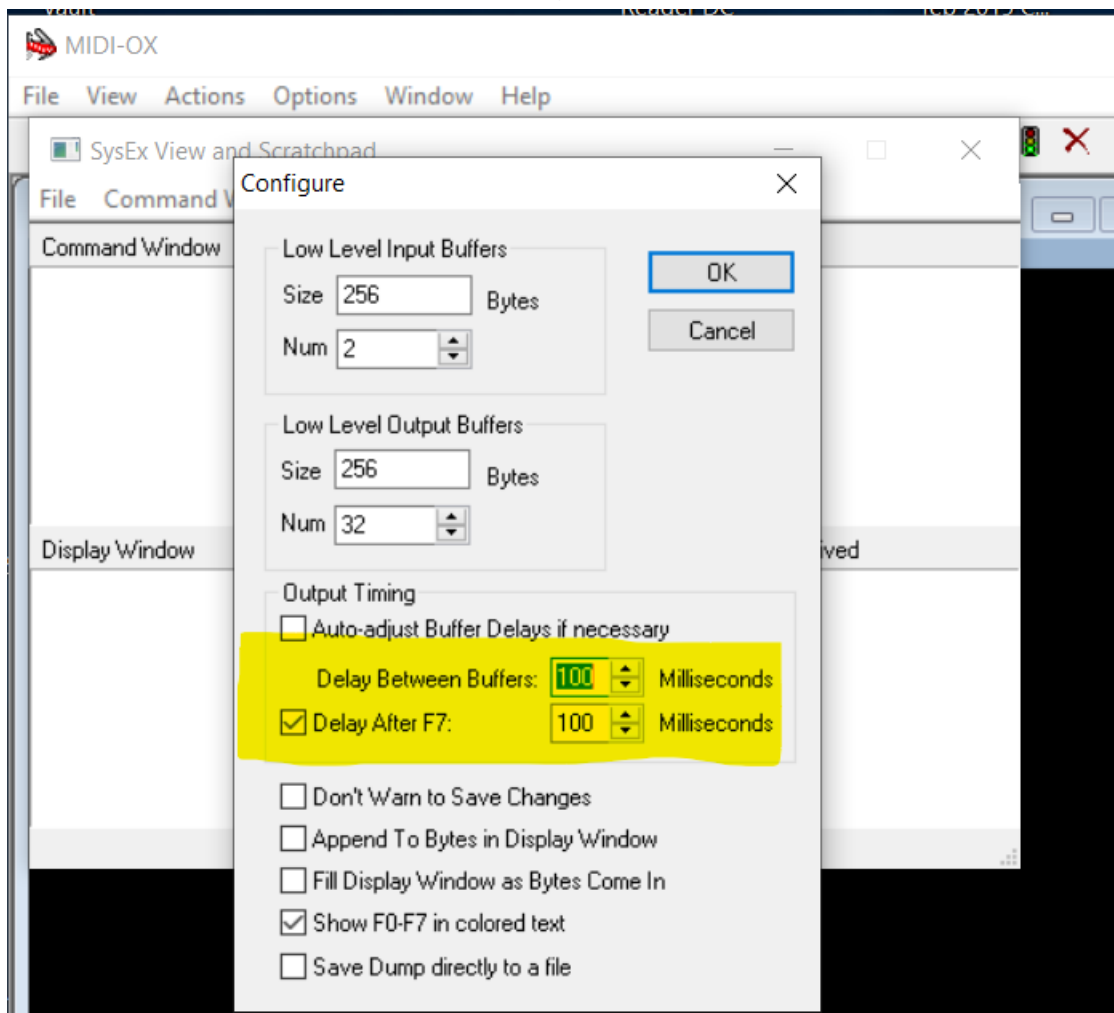
-
- Navigate to menu **View -> SysEx**



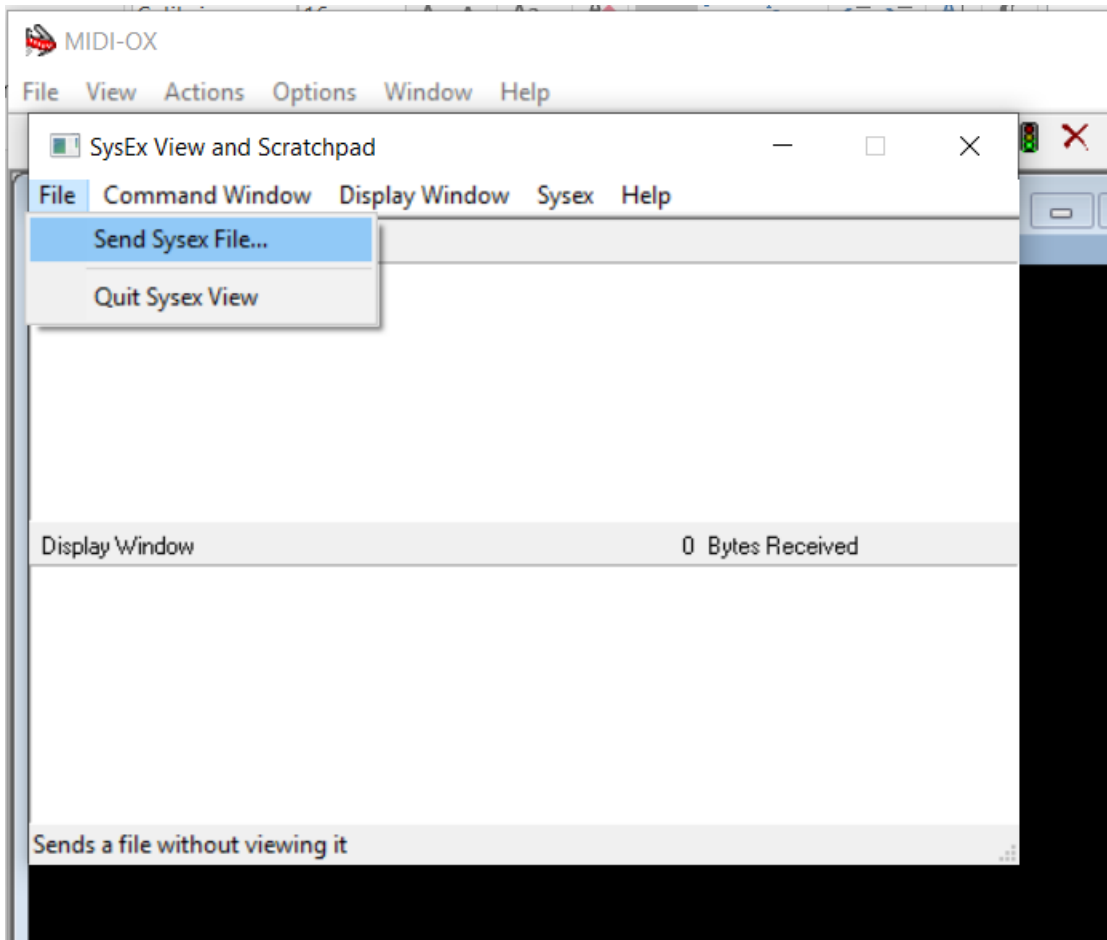
- The SysEx menu will open.



-
-
- Navigate to Sysex > Configure
Set delay between buffers and delay after f7 to 100
make sure the box before "delay after F7" is checked.



- Click on **File** and select the option Send Sysex File.



- Select the downloaded firmware file and press OK. Uploading the file will take a few minutes.
- After completion, the DT-RDX will reset and start up and the LED's will shown the new firmware version.

Any questions please let us know.